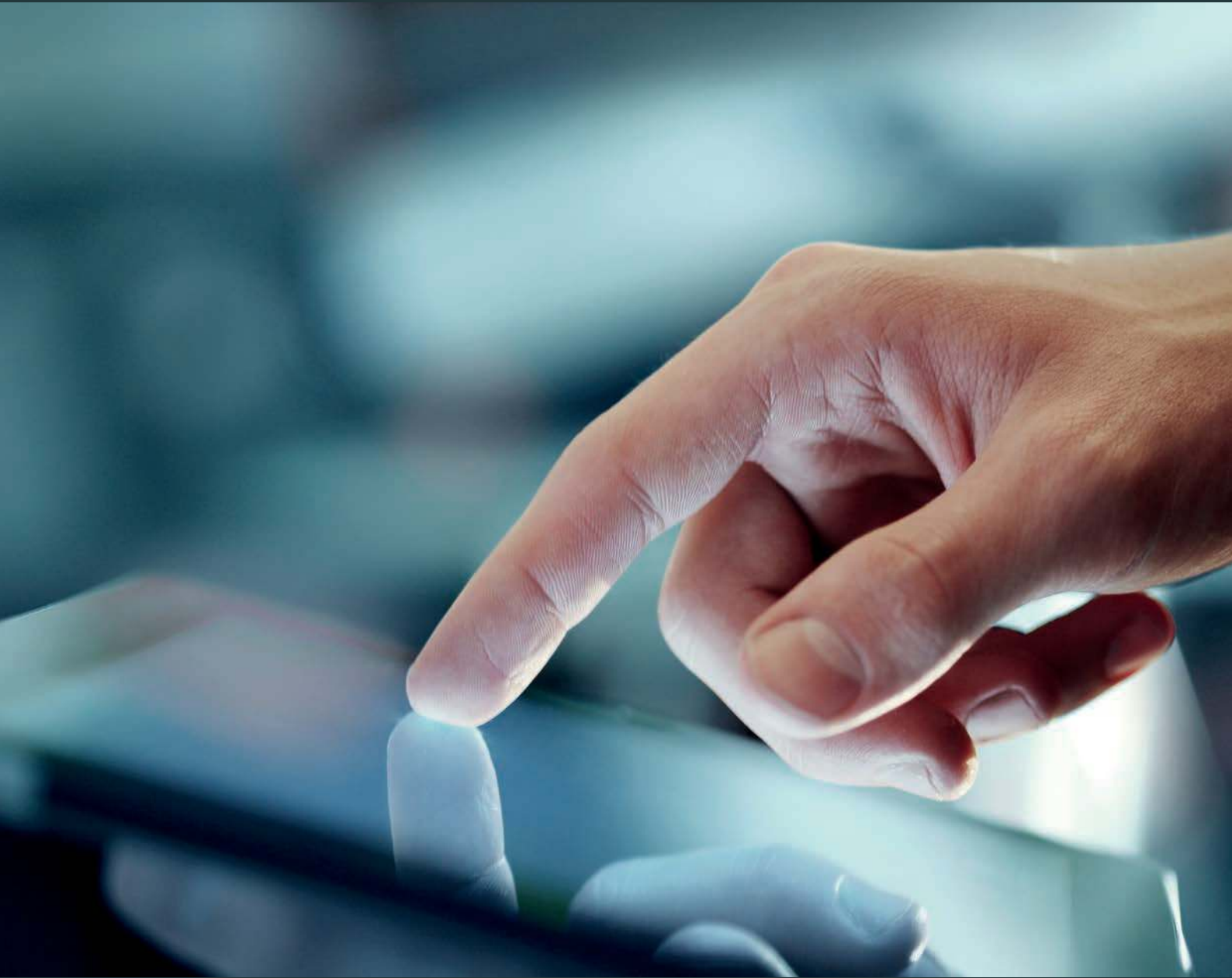




endtoend

The software for windows and doors



*integrate - helping to improve  
efficiency and productivity*



## Software overview

integrate has been developed by a team of experts as a response to the lack of modern software systems to help small and medium sized joinery companies manage their businesses efficiently and profitably.

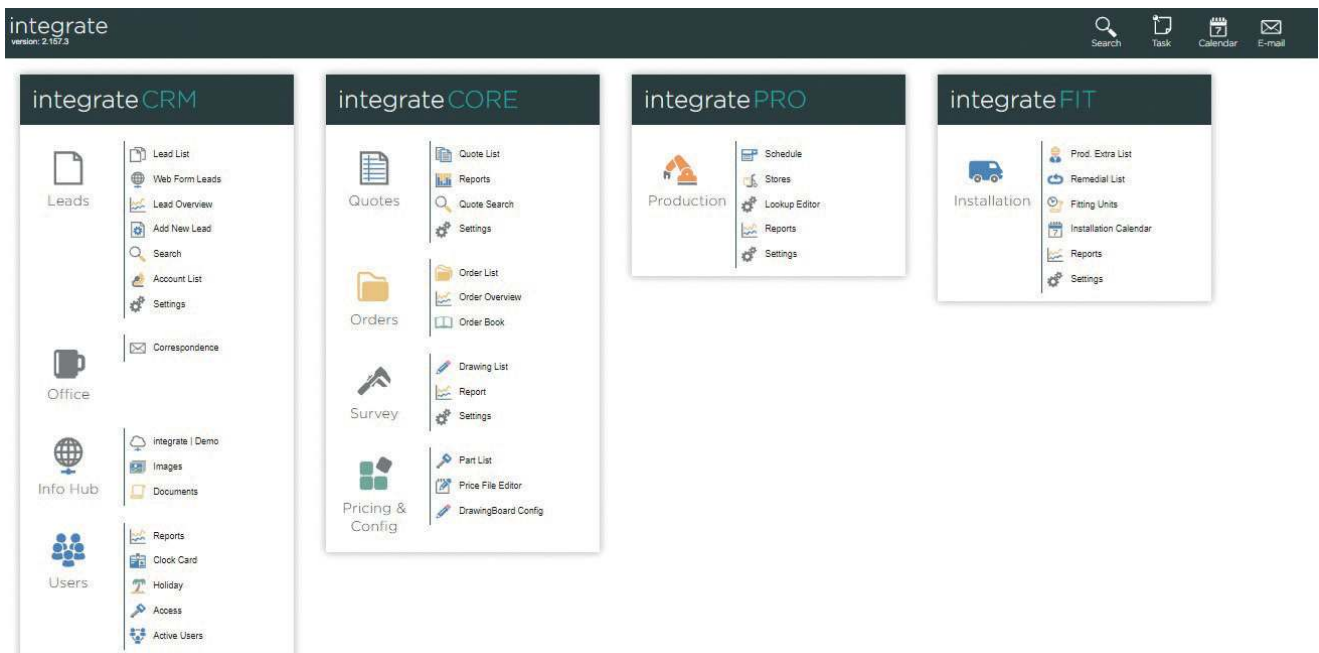
The integrate system is the first complete and flexible end to end business management package for the timber window and door specialist. You can select the parts of integrate that will help your business most, thereby maximising your return on investment.

integrate at its core covers designing and quoting for timber windows and doors together with the seamless production of all details needed for manufacture.

It can also cover every stage of the process from enquiry, through quote, design and manufacture to installation or delivery and after care.

integrate is cloud based so can be used anywhere with access to the internet. Users have access to everything from any location.

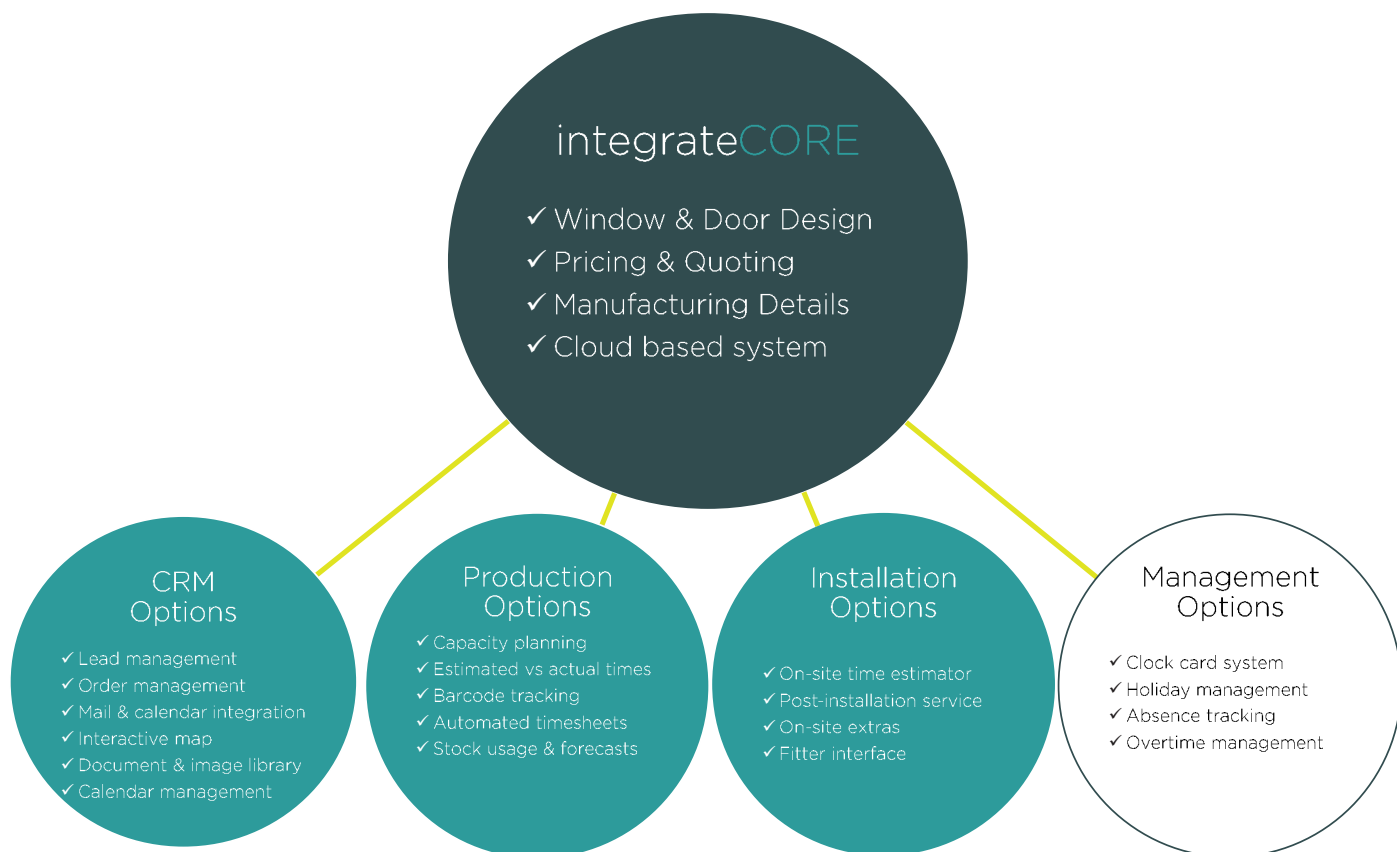
You can manage your business wherever you are. You can view your teams' diaries, send and receive emails, allocate enquiries, create quotations, check orders, log photographs and access everything you need to know.



Shown above.

integrate homepage. Icons and menus that appear depend on feature subscriptions. Viewable on any device which has a chrome browser.

# Software module options



integrate is designed to cover every stage of the process from enquiry, through quote, design and manufacture, to installation or delivery.

As a flexible modular system, integrate can be scaled to meet your needs.

There are four modules:

integrateCORE (window design, pricing and manufacturing details)

integrateCRM (customer and team and document management)

integratePRO (production schedule and tracking)

integrateFIT (fitting team interface)

You can select which modules you purchase, either as stand-alone components or as part of the full suite of software. You can also choose from a menu of functionality within each module and tailor the software precisely to your needs, meaning that you only pay for what you really need.

---

“We are impressed with the impact [integrate] is already having on our business. It’s amazing to have access to all information and resources in one place and leaves me time to manage the business rather than multiple spreadsheets.”



Andrew Madge, Managing Director. Gowercroft Joinery.

integrateCORE helps you produce detailed, accurate quotes in minutes.

## Window and door designer

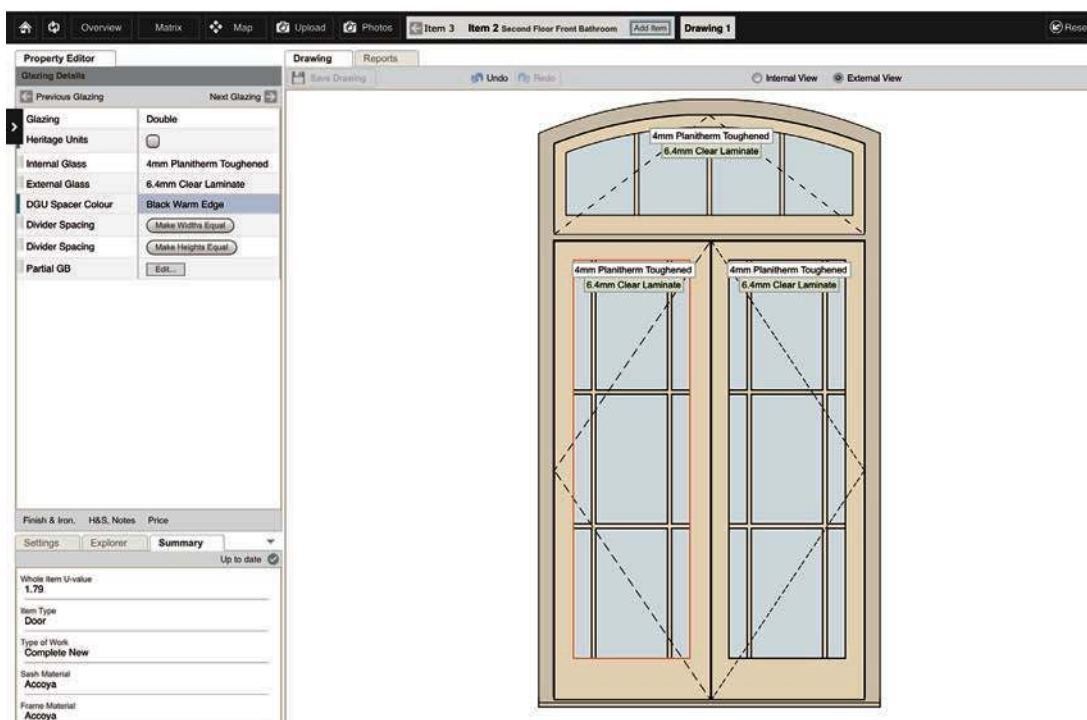
The window and door designer enables you to design and quote for timber windows and doors and seamlessly produce the details needed for manufacture.

The look and feel of the designer remains consistent whichever product is being specified. The system comes with a library of pre-set templates organised by type but you can add new ones in minutes.

- A drawing board easy enough to use on-site or in the office.
- Detailed professional quotes. Presenting the right image to customers.
- Site photos easily collected and stored with quotes. Saving time later.
- U values calculated for CE marking. BSI verified calculations.
- Drawings can be updated on site with final manufacturing detail and sizes.

## Manufacturing details

- Manufacturing detail sheets.
- Timber cutting lists and bills of material.
- Ironmongery pick lists.
- Loose materials, trims, architraves etc.
- Calculated glass sizes and ordering sheets.
- Spring and lead bar sizes and order form for sash windows.
- CE marking labels.
- Delivery notes.



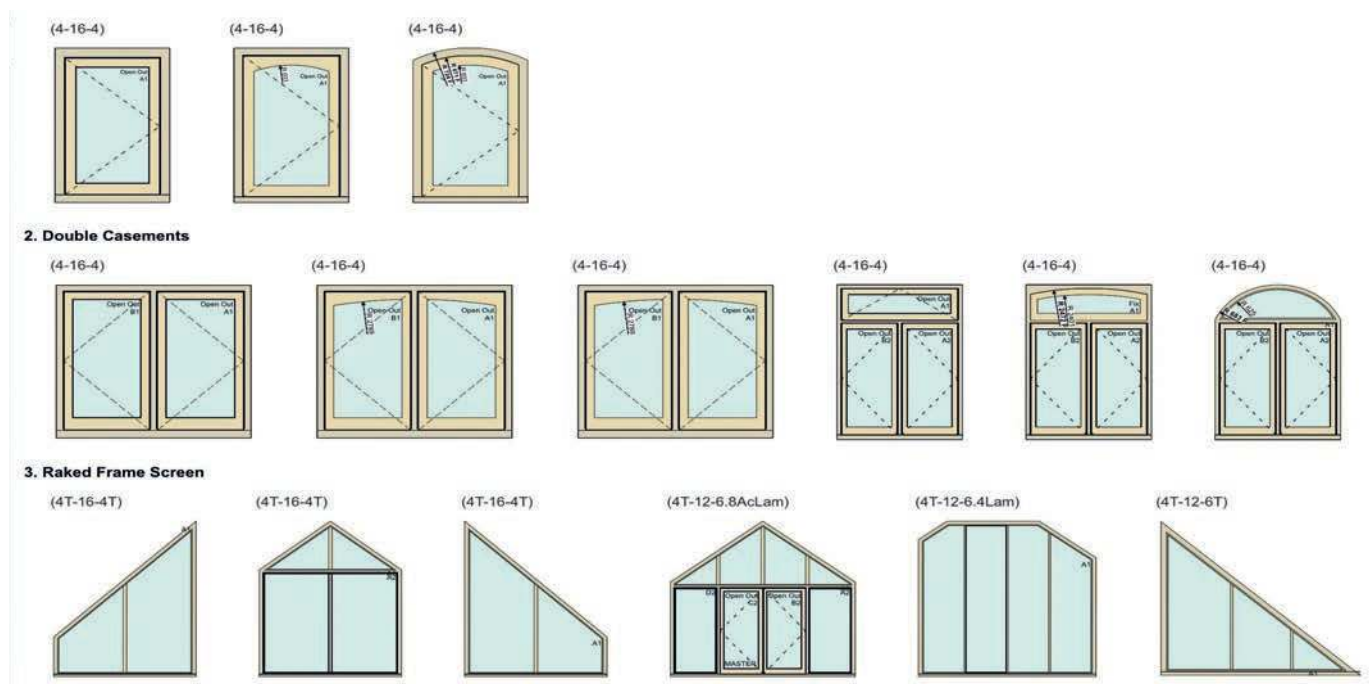
Shown above.

Main window design screen. Accessed on any device you can specify all details such as section details, openings, ironmongery, glass and access or health and safety details. You can also take pictures directly from this screen which are stored against the customer record.



supported designs include;

- Sash windows with weights and springs including bays, double and triple windows.
- Casement windows; flush, storm-proof, bay windows and raked frames.
- Doors and screens; entrance doors, glazed doors, direct glazed screens.
- Bi-fold, lift and slide; stable doors and doors with vision panels.
- Arched and curved sash windows, casements and doors.
- Partial replacements and repairs; e.g. new sashes to existing frames and frame repairs.
- Free text items. For any unusual or one off items an image can be uploaded and manual price entered.



Shown above.

Extract from casement window template designs. Due to the flexible nature of the integrateCORE designer virtually any configuration of window or door can be produced but templates make it even easier to draw the window or door you need.

integrateCRM helps keep everyone in the loop. It is designed for companies who want easy, instant access to their information to help manage their business.

integrateCRM has been developed by experts who have worked for many years in timber window businesses. This knowledge and experience has been invaluable in designing a CRM system to work with how you do your job rather than you having to change the way you work in order to keep a CRM system up to date.

integrateCRM benefits include;

- Customer correspondence and file notes. You can send and receive emails directly from integrate. It is also integrated with Microsoft Exchange and Google. Email templates with attachments transform repetitive tasks such as sending quotes to a few clicks.
- Team diaries are held centrally enabling you to see what each team is doing.
- You can find all the transaction information in one place. Each lead has an individual number for tracking from the initial enquiry to the order and site survey details.

Lead No / Qty	St.	Customer	Label	SOW	Type	Created	by	Sales	Postcode	Net Value	PF	
5 quotes displayed on 1 page											£220,435.56	
L32587 / Q2		Mr Stanley	D31492		NJ	9 Nov	GoB	MG	KT13 8AF	15	£8,433.66	45
L32587 / Q1		Mr Stanley	D31490		NJ	8 Nov	MSz	MG	KT13 8AF	15	£7,303.11	45
L32585 / Q1		Mr Morton	D31489		NJ	7 Nov	MSz	MG	SL4 3AJ		£595.44	45
L32566 / Q3		Mr Weir			NJ	6 Nov	GoB	CW	KT6 4AJ		£203,288.19	45
L29456 / Q2		Ms Dickinson	D31488		NJ	3 Nov	MSz	MSz	E9 6EG	4	£815.16	45
5 quotes displayed on 1 page											£220,435.56	



Shown left: Quote list view. Easily sorted by week, month year or any date range. Can also be filtered by product type. Site addresses are shown with a flag on the map. One click takes you to street view and route planner.

## Management options

With the addition of simple clockcard terminals integrate can record who has clocked in or is on holiday. Everybody's hours are tracked and collated automatically and reports monitoring time-keeping, attendance and absence are easily produced.

With access to the holiday system within integrate your staff can see who has already booked which days in their department, saving hours administering requests. Live holiday system information is also integrated into the capacity planning for the factory.



Shown above: Example clockcard terminal. Hardware not supplied by EndtoEnd IT Ltd.



integratePRO is designed help you keep your production on track and manage your production schedule effectively. You can see your full schedule and manage your factory loading wherever you are.

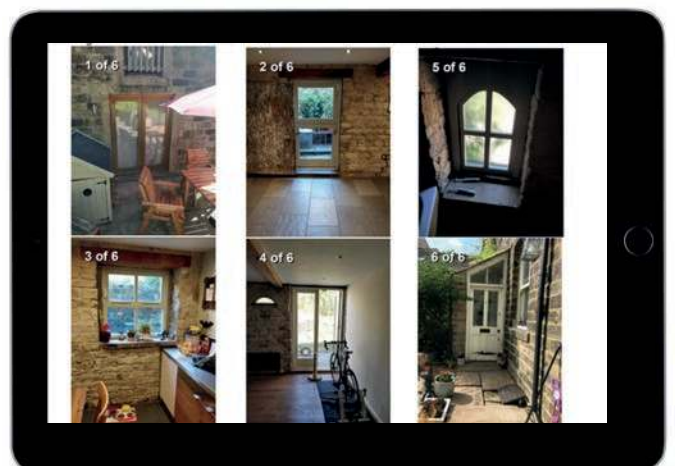
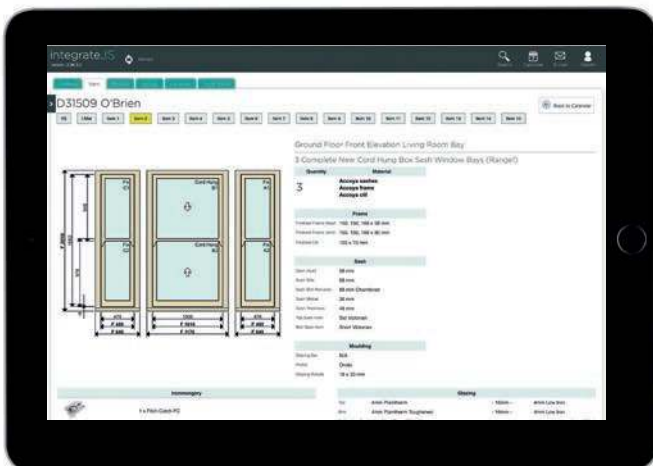
Joinery items are broken down into components automatically for bar-code tracking. This bar-code tracking system gives real time information on who is doing what and whether production is on track as a whole or item by item.

integratePRO also enables you to understand how long processes take. It allows you to benchmark cost estimates to actual performance and then make pricing adjustments to maintain or improve profit margins.

Production staff time sheets are automatically generated by integratePRO along with stock and materials forecasting and usage by order.



integrateFIT enables installation teams to access job and customer details via a tablet rather than having to take mountains of paperwork to site. Fitting teams can also access vital information regarding parking, access and health and safety equipment required, saving time before they get to site. On-site the team can feedback instantly with pictures or even place orders for extra materials required such as trims. Minimising delays to the job and maximising productivity on site.



Shown above:

Screenshots from integrateFIT window. The Installation calendar can be accessed by installers on-site with a tablet and internet access. All order details, specifications, materials required are shown along with sales and survey photos etc.



EndtoEnd IT Ltd  
5 Church View Office Centre, Elland Road,  
Ripponden, Sowerby Bridge, HX6 4DB

01422 762098  
info@endtoendit.com  
www.endtoendit.com

Company Registration: 11050332  
VAT Number: 284182489